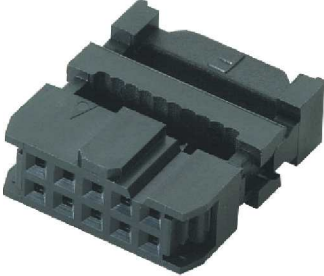


Ninigi

D A T A S H E E T

AWP-10 IDC SOCKET PITCH 2.54 MM



Specification:

- 1) Operating Temperature: 0°C ~ 85°C
- 2) Contact Resistance: 20 mΩ max. (initial)
- 3) Insulation Resistance: 1000 MΩ min
- 4) Dielectric Withstanding Voltage: 1000 VAC per minute

AWP-10G

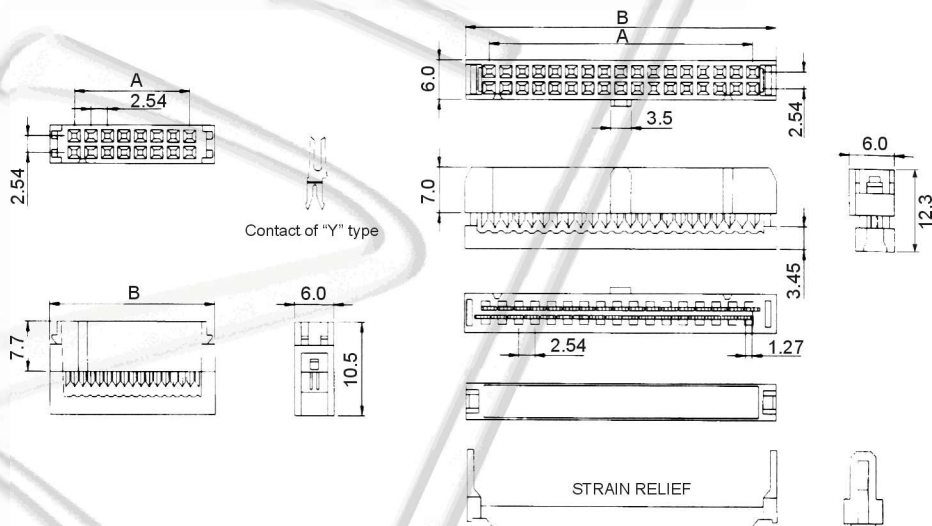


NO. OF CONTACTS (N)

10, 14, 16, 20, 26, 30, 34, 40, 50, 60, 64

HOUSING COLOUR

G gray
omitted when standard colour (black)



$$A = 2.54 \times (N-1)$$

$$B = 2.54 \times (N-1) + 7.24$$